



The Power Glide

Mason Dixon PFHA

Show Year 2012 ^{5th} Edition

**August 15, 2012
or there abouts**

Table of Content	Page
Regional Events of Interest / The President's Message	2
Editor's Corner //Volunteers Serving the PFHA Community	3
Current Mason Dixon Member Roster	4
Mason-Dixon 2012 Election Timeline // Current Nominees	5
The Continuing Adventures of Diane & Enrique	6
Mason Dixon at the Schoharie Serenade	7
High Point Awards // Mason-Dixon Banquet: the Teaser Ad	8
Are You a Trailblazer?	9
Trailblazer Roster	12
New Beginnings Paso Fino Horse Rescue	13
"A Long Time Ago and Not So Far Away..."	14
USEF Most Popular Breed Contest	17
Exploring the Land of Kimchi and Typhoons	17
<u>Grand National Show</u> Information, abridged	20
Grand National Show Recreational Rider Events	23
Charles Town Parade of Horses	26
Classified Advertising	27
Mason Dixon Contact Information	29
Forms (for additional forms see www.masondixonpfha.org/forms.applications.php)	30



Our Website: <http://www.masondixonpfha.org/>

Mason Dixon & Regional PFHA Events of Interest	
<u>Charles Town Parade of Horses</u> , Charles Town, WV	September 23
<u>Piedmont NC State Fair Show</u>	October 18
PFHA Grand National Horse Show—Lexington, KY	October 7-13
Mason Dixon Annual Membership Banquet, Meeting and Election	Nov. 3
Pennsylvania Farm Show	Jan 5-12, 2013
Maryland Horse Exposition	Jan 18-20, 2013
Pennsylvania Horse Exposition	Feb 21-24, 2013
Reading Pet Exposition	March 22-24, 2013

President's Message

Dear Members,

It's hard to believe that summer, for all intents and purposes, is over. The Grand National Show (GNS) in Lexington, KY will be upon us in no time. I want to extend my best wishes to all our members competing at the show. For those of you who feel that the GNS is just for the typical show person, take a look at page 23 in the newsletter and see what is being offered for the recreational rider. If you've never been to a GNS, consider joining us for "Brio in the Bluegrass". I'll bet you'll have a great time and our competing members will certainly enjoy the support.

Just a reminder on a couple of important dates to put on your calendar. Current annual memberships will expire on 30 September; please take the time to renew your membership. The updated form is on the last page of this newsletter. Our Annual Membership Meeting and Awards Banquet is scheduled for November 3rd at the Rising Sun Restaurant in Telford, PA. There will be a number of important topics discussed as well as the election of our officers for the next two years. I hope you all will try to attend.

If you are game for a parade of horses, consider participating in the Charles Town, WV Parade of Horses on Sunday September 23rd. You must pre-register by September 21st. Click on the hotlink above. It's a lot of fun being out there with all horses and no fire trucks or bands to spook your horse.

I hope you all have had more time in the saddle than I have this past year. Most of my "saddle" time has been in my car going to and from work. I am going to make a serious attempt to get out on the trail a lot more this coming year. We still have time before the snow flies. Let's get out there and enjoy our Pasos!!

Karen

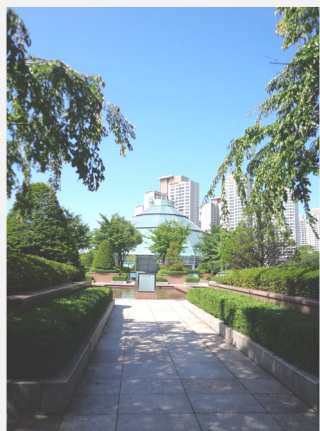


THE EDITOR'S CORNER:

Here's a novel concept: reward readers of the PowerGlide for their interest!



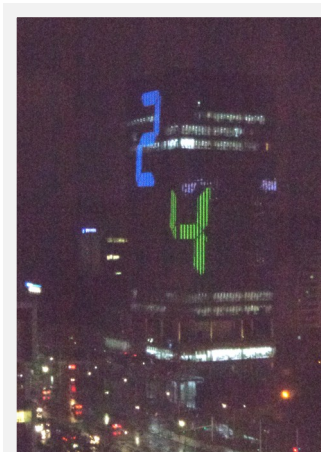
Continuing through the October Issue, there will be an icon () of this size hidden somewhere after the 3rd page. Be one of the 1st 10 people to email or call me (267-446-6862 / mdpasofino@zoominternet.net) within 10 days following publication of the PG and describe where you found the icon. In return, you will be entered into a drawing for a gift basket valued at greater or equal to \$50. The drawing will be held during the Annual Banquet. You must be present to win. Limit: 1 entry per family per issue. —Diane



No, it *did not* rain every day...

Dear Members,

I wish to apologize for the lateness of the publication of the August edition of the PowerGlide. While I attempted to complete the publication before my 3-week work-imposed travel overseas, I failed miserably. To compensate you for the tardiness of this publication, I am including a short article describing my adventure in South Korea. Even though my travel was at the direction of my employer, I was given several opportunities to experience what I could of the local and non-so-local environment. Though none of my activities involved "horseplay", I did have a great time at places like the local shopping zones and the Joint Security Area within the DMZ. See for yourself among the pages that follow.—Diane



View from my hotel room during Typhoon Bolaven.

Mason-Dixon Members Serving the Paso Fino Community:

Karen Basehore—MD President; PA Farm Show Demo; MD Homepage.

Ann Bastian—Silent Auction

Nick Burgos—PFHA Cert. & USEF Reg. Judge & Trainer; Reading Pet Expo.; Lexington Show Decorations

Susan Data-Samta—MD Recreational Rider Coordinator & PFHA Recreational Rider Committee; Recreational High Points; Regular PG Contributor

Kathy Dell— MD Secretary; MD Membership Chair

Diane Dutt—MD V. President; Editor-Power Glide; Show High Points; MD Facebook page; village idiot

Angel Flores—Trainer

Virginia Foster— PFHA Strategic Planning (Chair), Computer, Historic, Amateur Owner and Rules Committees

Diane Gates—Regular PG Contributor

Lisa Gorsuch—MD Regional Delegate to PFHA; PFHA Finance, Membership and Events Committees; MD May Day Show; Maryland Horse Expo.; MD Futurity Coordinator

Forest Gray—Ring Master

Nola Haupt-Keill—Trainer; Equine dentist; Youth Activities

BJ Schuler— MD Treasurer; MD Spectacular; PFHA Finance Committee

James Laird—Trainer

Carolyn Marinko—MD Nominating Committee

Terri Mobius—Trail Ride Leader; regular PG contributor

Maryann Schlesman—MD Nominating Committee

Tiffany Senseman—Youth Chair

Dick Shaffer—Trail Ride Leader

Lynn Shaffer— MD Nominating Committee; National Auction Basket Wrangler

Rick Shaffer—PFHA Cert. & USEF Reg. Judge & Trainer

Dick Teachout—Trail Ride Leader; Farrier

Lori Wieszakowski— Pennsylvania Horse Expo.; and Ribbon Coordinator

Debbie Wolkowicz— PFHA Cert. Judge

Members Current for the 2012 Show Year (Oct 1, 2011—Sept. 30, 2012)

Barbara Adrian	Jacquelin Grubb	Tiffany Senseman
Rosanne Ashley	Amanda Hamilton	Dick and Lynn Shaffer
Karen Basehore	Nola Hauptert-Keill and Robbie Keill	Jena Shaffer
Ann Bastian	Kathy Holloway	Rick, Suzette, Anni and Justin Shaffer
Susan & Dan Beverino*	Anni Howell	Beth & Bob Sheldon*
Maureen Boskin	Jaime Jaramillo-Vallejo	Dorothy Snedden
Ben & Tammie Boyer	Mary Ellen Jepson	Stephanie Snyder*
Earl & Dawn Burg	Elizabeth Kleiber	Maranell and Toby Sonn
Nicholas Burgos and Darnell Williams	Karen Kraushaar	Karen Spiegelthal & Angel Flores Family
Mark & Kathrine Byrkit	James and Patricia Laird	Michael Srock
Denise Corcoran	Nancy Lewis	Ann Stever
Susan Crawford-Charters	Maribelle MacAlpin, Jessica and Allison Brosko	Beverly and John Sturm
Rosemary D'Agostino and Raymond Williams	Beaverlea Roye-Manderbach & Gary Manderbach	Richard Teachout
Celeste Dashiell & Glen Shade	Carolyn Marinko	Nancy Thomas
Susan Data-Samtak	Susan Marshall	Charles and Margaret Thorne
Kathy Dell	Terri Moebius	Noelle Vandusen
Jorge Donado	Joseph Motsay	Randy and Janet Weese
Jerry & Angela Dotson	Maryellen Neimeyer	Ron and Joy Weyer
Diane Dutt	Mary Palm	Lori & Tom Wieszkowiak
Martha Eldredge	Gale Peluso	Connie & Debbie Wolkowicz
Joseph Fisher	Melanie Petri	Carol Wood
Virginia Foster	Tom and Paul Radulewicz	Don and Mary Wright
Raymond Gallagher	Toni Roland*	<i>* Welcome, New Member!</i>
Kathrine Gamble	Maryan and George Schlesman	
Diane Gates	B.J. and Gary Schuler	
Keith and Lisa Gorsuch	Melody Adrian Scioli	
Forest & Judy Gray		

Note: if you renew your membership at either the May Day (Dillsburg) or MD Spectacular (Lexington) show, PLEASE provide Kathy Dell with a copy of your renewal form.

If your name is not on this list, please take a moment to renew your membership. The renewal form is located on page 31. If you feel that your membership status is not represented correctly in the list above, please contact Kathy Dell at Dell@tessco.com or 410-229-1232.

Mason-Dixon PFHA Election 2012 Timeline:

4 Oct 2012

Membership renewals due for Absentee Voters

5 Oct 2012	Candidate Position Statements due to PG Editor
15 Oct 2012	Candidate Position Statements Published
15 Oct 2012	Proposed Amendments to the MDPFHA By-laws Published
15 Oct 2012	Absentee Ballots Published in PG
29 Oct 2012	Absentee Ballots due to Secretary
3 Nov 2012	General Meeting & Election
3 Nov 2012	Membership renewals due for all voting members
4 Nov 2012	Election Results published by Email and posted to Homepage
15 Dec 2012	Election Results published in PG
1 Jan 2013	New Board of Directors begins its tenure.

Current Nominees for the Mason Dixon Board of Directors:

President:

1. Nickolas Burgos

Vice President:

1. Cathy Dell
2. Gale Peluso

Treasurer:

1. Beth Sheldon

Secretary:

1. Susan Crawford-Charters
2. Jena Shaffer

Delegate:

1. Lisa Gorsuch

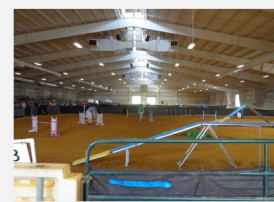
WE ARE LOOKING AT CHANGING THE VENUE FOR THE MASON-DIXON SPECTACULAR IN 2013!!!

WHEN: 14–16 JUNE, 2013

WHERE: DREAM PARK, GLOUCESTER COUNTY, NJ

WHY HERE: An opportunity presented itself for us to join fellow Paso Fino owners, who had already reserved the facility for a show in 2013. Mason-Dixon, having suffered significant losses of revenue at both of our last shows, felt it was worth visiting the facility and consider the possibilities for a fiscal turn-around while providing an improved show experience for participants. Three members of the executive committee along with two additional members made the trip. What we found far exceeded our expectations. Not only does the facility have a lot to offer but the staff is accommodating and extremely helpful in providing suggestions for a truly wonderful and successful show. The opportunities to excel here seem almost endless. For example, they are helping us to identify cost saving approaches to provide musical and horse-related entertainment, improved food options and additional vendors. Its location also has the benefit of being closer than Lexington, VA for most of our showing members; reducing travel costs and providing easy access from major highways as-well-as reduced cost for Judge transportation due to proximity to the Philadelphia Int'l Airport. Our acting Treasurer and Show Chair, BJ Schuler, is currently performing a profit/loss analysis to determine if this would be the right alternative venue for us. **Click HERE to see for yourself!**

Please let us know your thoughts, concerns and other alternatives at mdpasofi-no@zoominternet.net



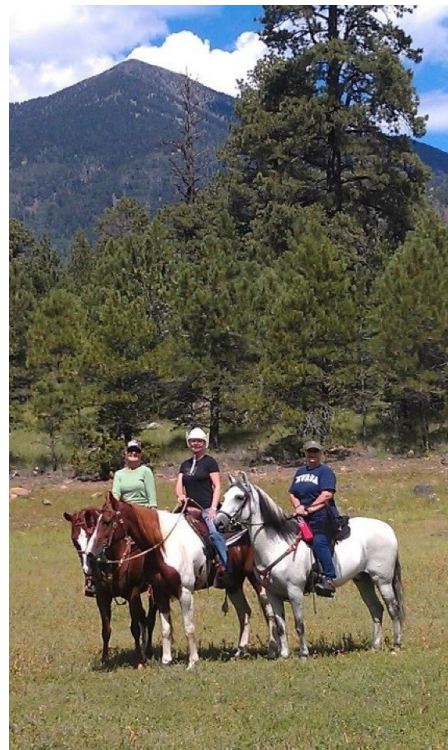
The Continuing Adventures of Diane & Enrique!

The Giddy Up Gals Labor Day Weekend Camp-out

Labor Day Weekend found Enrique and myself at the [Little Eldon Horse Campground](#) just NE of Flagstaff AZ. It is a National Park run Equestrian Camp in the Coconino National Forest. The views of the San Francisco Peaks were just fabulous.



The first day we rode in the lower areas, but on the second Day, we rode up into the mountains. Encountering no less that THREE thunderstorms, including the hail. We were out along high cliffs with very difficult



and challenging terrain. Twice I had to get off because of anxiety! Enrique was a goat, and did his very best. He is an athlete far beyond my wildest expectations of him, as most of you remember his first few years! The base camp is at 8000K feet in altitude, and we rode up to roughly 10K. On a rare occasion, maybe after a long canter, Enrique was mildly blowing. HE DA MAN! Climbing up over Granite Boulders, through narrow slit passages, and hanging off the

side of a cliff on a trail no wider than two feet, Enrique just did the JOB of a mule!



There had been some fire damage from the wild-fires last year, but this season we have been getting lots of rain. In Flagstaff there is a great AL-PINE mix of pine trees, wildflowers, and even glittering ASPEN trees like in Colorado! The nights ran about 55 degrees and during the day, with the sun out, 80 tops. It was a great brake from the heat in Phoenix and the rain was a real treat. Unless you were out on the side of a cliff clinging to the trail soaked thru and thru! My tack is SO CLEAN!

Sedona is planned for December. Until then, **HAVE TRAILER; WILL TRAVEL!**

Diane & Enrique!

Mason-Dixon at the Schoharie Serenade

By
Ann Bastian

The Mason Dixon region was well represented at the Schoharie Valley Paso Serenade in July. The crews from Ro No Ranch and TNT Paso Finos were present. Overall, everyone did a great job with their horses, taking home multiple ribbons as well as some year end rewards. Ann Bastian, Nicole Bartell, Nola Haupt-Keill, Alaina Langner, and Forest Langley all received year end awards for 2011 at the Saturday night dinner. Ann Bastian's Rigoletto de Las Cameli- as also earned his title of proficiency while at the show.



Just in case you are interested in participating next year: The show is offered by the Northeast Paso Fino Horse Association and has, for the past several years, been located in Cobleskill, New York. Typically, the show takes place early to mid-July. Show information is available on the [Northeast's website](#) and dates are published in the Power Glide once they are announced.

In my experience, this is a well run show opportunity and I recommend you consider participating.—Diane D.

New Ideas Sought for High Point Awards

There has been some talk about looking into new year end awards and I have been asked to take on this task.

I am asking anyone who has an idea on this subject to please forward their thoughts to me. I will be seeking advise from members who have previously taken on this endeavor and done it so well. We will be checking into this for the 2013 show season, not this year.

Cost is a huge consideration while looking for something new. We need people to get out there and show their horses and come up with ideas for making some additional money for the association. Membership is declining as is the number of show entries.

Please email me your thoughts kazisimage2@aol.com.

We would like to have discussion on this subject at the 2012 year end banquet so please get your ideas in so they can be presented.— *Lori Wieszowskiak*

Note: Diane Dutt will continue to tabulate the High Point values for shows; Susan Data-Samtak will continue to tabulate the Recreational High Points.

Mason-Dixon Annual Banquet

3 November 2012

The Rising Sun Inn, Telford, PA

Owned, in part, by our very own BJ and Gary Schuler

Time: TBD but anticipate that it will be fairly early to allow time to cover the Agenda, vote, relax over a fine dinner, and socialize among our friends. Final times will be published in the October PowerGlide.

Cost: \$10.00 per adult; Children 12 years old and under, \$7 each.

The complete menu is not yet set, but you should expect a fine buffet and light desserts. If you would like to supplement the dessert offerings, you are welcome to bring a dessert to share.

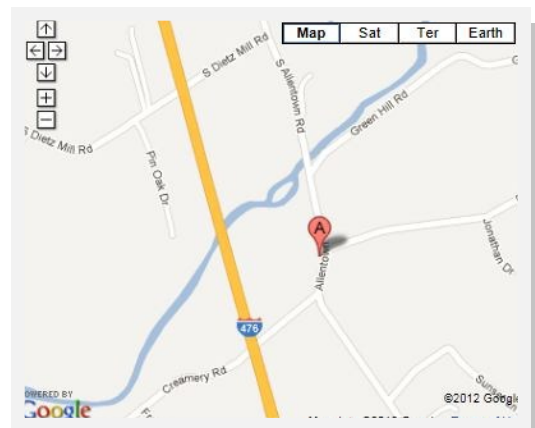
Achievements will be recognized and Awards distributed to Show and Recreational Riders. Come and share this evening of celebration with your friends and fellow members. We look forward to seeing you there! Click on the link above (or below) to access the Rising Sun website.

The [Rising Sun Inn](#)

898 Allentown Rd.

Franconia, PA 18969

215-721-6350





Are You a Trailblazer?

Recreational Riders !

You may have noticed that MDPFHA has been on the trail to encourage the non-show or recreational rider. The Power Glide has had at least one story or article about RR in each 2012 issue. We need YOUR stories and experiences to continue this trend. Come on! Send those photos to our PG Editor!, Diane Dutt at dld5@zoominternet.net

According to the PFHA, over 80% of members consider themselves Recreational or Trail Riders.

One of the volunteer jobs I have taken on for MDPFHA is to administer the Non-Show Year End Awards Program. Each time you ride in a formal non-show event, such as Trail Rides, Judged Pleasure Rides, Parades, Demonstrations, *etc.* you are eligible for 5 points toward a year end award. There are many Age divisions, therefore, many chances to win.

These are in addition to the Trail Blazers Program and PFHA's Ticket to Ride and Pasos For Pleasure. (Each requires separate paperwork for you to be included.)

If you are a recreational rider and have ridden your Paso Fino in Clinics, Parade, Recognized Trail Rides, Horse Demos, I need your paperwork NOW for Non-Show Year End Awards.

2012 NACMO Ride Schedule :

New Jersey/New York/Penn/Ohio/VA

09/16/2012	Conashaugh Canter - Conashaugh Park, PA
10/06/2012	Fall Foliage - Birdsboro
10/28/2012	Blue Mountain Hustle - Hawk Mt
11/11/2012	Lakeside Lope - Blue Marsh-Church rd Bernville PA
12/16/2012	NO FRILLS...no food, just come and Ride - Blue Marsh

A Message from the PFHA Recreational Rider Committee:

With the Grand National Show just around the corner, it is time for all members to submit their Pasos For Pleasure log sheets and Ticket To Ride forms. Details on each of the RR programs and submission information can be found in the RR Handbook which is online on the PFHA website at www.pfha.org.

All Pasos For Pleasure log sheets for 2012, regardless of the level achieved, must be sent to the PFHA office and postmarked by September 5, 2012. Based on the total number of hours ridden/driven between September 1, 2011 through August 31, 2012, the rider/driver with the most hours logged will receive the 2012 Pleasure Annual Award and be recognized at the GNS. The 2012 Top Ten PFP participants will be featured in the Paso Fino Horse World magazine in 2013.

The Ticket To Ride drawing for great prizes will be held at the Recreational Riders Social on Friday at the GNS. Participants need not be present to win. Each TTR form must be complete with **five (5)** initialed qualifying activities such as organized trail rides, drill team, parades, pointed trail rides and competitive rides including Pleasure Long Distance Trail, Competitive Trail, and Endurance Trail. And remember, if the ride is sponsored by a PFHA region, you are entitled to fill in **two (2)** entry blocks for that event, doubling your chances to win. All completed TTR forms with 5 entries must be sent to the PFHA office and be postmarked by September 5, 2012 to qualify. If you have an incomplete TTR form, just keep it and submit it when complete towards next year's drawing.

The RR Committee hopes many of our RR members will attend this year's Grand National Show & Expo. Starting on Wednesday, there will be a full line-up of RR activities to watch and participate in. We hope to see you there!

Thank you,

Recreational Rider Committee

Grand National Show Recreational Rider Event Information Begins on Page 23!

Please consider joining the Recreational Rider Program. Your 1-time payment* of \$10 could bring you valuable awards and prizes! Contact your RR Rep., Susan Data-Samtak, for more information!

* 1-time payment applies when MDPFHA membership is renewed each consecutive year.

CONGRATULATIONS TO MAUREEN BOSKIN!

Great job, Maureen for reaching the milestone of **1500 Hours** in the **Trail Blazers Program** (YAY!)



Susan Samtak and Torbellino
carrying the Pony Express Bag



John Samtak and Zorro approaching the

August 18-19, 2012 -trail ride- * Copeland Forest, Ontario, , Canada * Central Canada PFHA Trail Ride * CONTACT: Diane Vollick 705-686-3727 - dianevollick@gmail.com	September 15, 2012 -trail ride- * Stauton River, South Boston, VIRGINIA, * Stauton River Trail Ride * CONTACT: Candace Link 336-413-5204 - paso-link@yadtel.net Website: http://www.dcr.virginia.gov/state_parks/sta.shtml New campground with stalls for 2012. Cabins also available for rent. Excellent trails.
September 9, 2012 -trail ride- * Mono Cliffs Park, Ontario, , Canada * Central Canada PFHA Trail Ride * CONTACT: Denise Chandler 705-424-6712 - petisepasofinos@aol.com	South Eastern Distance Riding Association: Visit the following site for more information. -trail ride-, * South Eastern Distance Riding Association * CONTACT: - http://www.DistanceRiding.org For the most up to date SEDRA CTR/Drive and Endurance Trail info please visit the above link.
September 14-16, 2012 -trail ride- * Bar-J Ranch, El Dorado, , * SWPFHA Fall Trail Ride & Rec Rider Activities * CONTACT: Vivian Ashcraft 870-942-7286 - pasofino@windstream.net	Upper Midwest Endurance and Competitive Rides Association: Visit the following site for more information. -trail ride-, * Upper Midwest Endurance and Competitive Rides Association * CONTACT: - http://www.umecra.com/ For the most up to date UMECRA trial ride info please visit the above link.
August 18-19, 2012 -trail ride- * Copeland Forest, Ontario, , Canada * Central Canada PFHA Trail Ride * CONTACT: Diane Vollick 705-686-3727 - dianevollick@gmail.com	Southeastern Endurance Riders Association: Visit the following site for more information. -trail ride-, * Southeastern Endurance Riders Association * CONTACT: - http://www.seraonline.org/rides.htm For the most up to date SERA trial ride info please visit the above link.
August 31-September 3, 2012 -trail ride- * Abiquiu, NEW MEXICO, * Great Western Labor Day Trail Rides * CONTACT: Beth Martin 505-249-6981 - bmartin8@humana.com	Eastern Competitive Trail Ride Association: Visit the following site for more information. -trail ride-, * Eastern Competitive Trail Ride Association * CONTACT: - http://www.skidmore.edu/~elarsen/ECTRA.htm For the most up to date ECTRA trial ride info please visit the above link.
American Endurance Ride Conference: Visit the following site for more information. -trail ride- ♦ American Endurance Ride Conference * ♦ CONTACT: - http://www.doublejoy.com/erol/Calendar/ For the most up to date AERC trial ride info please visit the above link.	South Eastern Distance Riding Association: Visit the following site for more information. -trail ride-, * South Eastern Distance Riding Association * CONTACT: - http://www.DistanceRiding.org For the most up to date SEDRA CTR/Drive and Endurance Trail info please visit the above link
	North American Trail Ride Conference: Visit the following site for more information. -trail ride-, * North American Trail Ride Conference * CONTACT: - http://www.natrc.org/ For the most up to date NATRC trial ride info please visit the above link.

Attn: MDPFHA Recreational Riders:

As most of you are aware, PFHA present the annual High Point Awards for Endurance, Competitive Trail Ride, and Pleasure Long Distance Trail Ride at the Grand National Show, plus conducts a drawing of Ticket To Ride tickets that have been submitted through the year for prizes and/or cash.

The Recreational Rider Committee has recently been advised that **no entries have been submitted to date in the Competitive Trail Ride (CTR) category**. Not only is it important to have entries submitted in each category to keep our programs viable, but we also would love to see our recreational members compete for the prestigious annual awards. And remember, your competitive rides can also count toward the Ticket To Ride program for a chance to win valuable prizes.

If you have thought about attending a CTR in your area, please sign up and submit your paperwork to PFHA no later than 20 days after the event. **With no entries to date, you have a very good chance to win the annual award.**

We would also like to remind everyone to submit their Ticket to Ride forms to PFHA as they are completed. The form may be downloaded from the RR Handbook found on the PFHA website. Participation in most non-show activities with their registered Paso Fino qualify the member to complete a block on the form. If the event is hosted by the region, it counts for two blocks. Simply include the activity manager's name, initials, date, name of activity, city, and state, and circle if it is a PFHA regional event or not. Submit your TTR form no later than September 1st to be eligible for the TTR drawing at Nationals. Winners need not be present to win.—PFHA Recreational Rider Committee; Susan Data-Samtak, MDPFHA Rep.

Current TrailBlazer Roster:

Karen Basehore

Maureen Boskin

Jessica Brosko

Allison Brosko

Diane Dutt

Virginia Foster

Kathrine Gamble

Diane Gates

Jacquelin Grubb

Maribelle MacAlpin

Carolyn Marinko

Terri Moebius

Toni Roland

Susan Data-Samtak

John Samtak

Maryan Schlesman

George Schlesman

Dorothy Snedden

Michael Srock

Ann Stever

Connie Wolkowicz

Please contact [Susan Data-Samtak](#) and [Kathy Dell](#) if you feel there is a discrepancy regarding this list.

<https://www.facebook.com/groups/PasoFinoUrgentRescue/>

Contacts for Paso Fino Urgent Rescue:
Michele Klawitter
michele@ranchodeladama.com

Jenn La Mana:
jenn@ranchodeladama.com



<http://newbeginningspasofinohorserescue.com/>

Contact for New Beginnings:

Glenn Davis glenn@ranchodeladama.com

It's a New Beginning for PFUR

*New Beginnings Paso Fino Rescue
and*

*Paso Fino Urgent Rescue (PFUR) have merged!
PFUR will now be an affiliate of New Beginnings!*

PFUR is a group of members on Facebook who dedicate their time to aiding in the rescue of Paso Finos from dire situations, including, but not limited to, auctions, starvation and neglect. Originally founded May 2011, PFUR grew from a few members of another group on Facebook to save one mare, Airietta de Excalibur, and have now grown to 675 members strong, have saved 26 horses to date (last one saved 7/11/12) and have numerous horses listed now looking for homes. We hope to one day have people who are desperate to find homes for their Paso Finos post on our group instead of sending them to auctions. Any donations to PFUR will now be tax deductible. PFUR will still be able to operate like they do now, nothing will change there.

New Beginnings Paso Fino Horse Rescue is the only nonprofit 501 (c)3 in the USA dedicated to saving Paso Finos. Founded in 2008, New Beginnings has saved numerous Paso Finos. NB also works to make the general public aware of the versatility of the Paso Fino breed through horse soccer demonstrations, expos, trail rides and other various activities throughout the year. By increasing public awareness of this unique breed, and by showing that even people with back, hip, and leg problems can experience the joys of riding a horse, ownership of this breed will increase and help us place these noble horses into loving, caring homes. In fact, there will be a benefit ride held in Oklahoma on November 9-11, 2012 that is PFHA sanctioned for both the Ticket To Ride Program and the Long Distance Pleasure Ride Program, to raise funds for NB.

PFUR would like to thank Riverview Farms for unwaveringly supporting us and helping get us on our feet.

And thank you to ALL of the PFUR members who have stuck with us through everything and have helped make this group what it is today. We would be nothing without our members. You should all be very proud for saving the Paso Fino!

A Long Time Ago and Not So Far Away.....

OK. You can (and should) consider the following to be "Summer Filler". The show season is in full swing and everybody is busy doing "horse stuff". No one has time to sit down and type. Even me. So, I ask for your indulgence as you read the article that follows. I wrote the piece a few years ago, just after we "bought the farm" and were gaining enough confidence to venture out on our own. I hope you find it as amusing as I did when I re-discovered it lurking in a file folder. Now, cast your mind back to the day when you were a young, foolish and incredibly naïve horse owner...

Ignorance is Bliss: the intermittent but continuing adventures of Zaza and Cometa and their hapless riders Karen and Diane

This Month's Adventure: Lake Redman and the William H. Kain County Park, York County, PA

As some of you know, Karen Basehore and I finally have wheels of our own and are able to haul our steeds hither, thither and yon. Now, I know that many of you have experience and wisdom far beyond what we will ever achieve, but perhaps you can recall a time when the idea of using a rig to haul horses to places other than the vet or a show was inconceivable! So it was for us. With those memories in mind, we thought we'd regale you with the observations and experiences of two very novice trailblazers.

Today is Memorial Day and the weather in southern York County is absolutely beautiful. We had planned to rise early (0530), and head out at 0630, but, being a holiday, the sun rose long before we did. Our mission was to go to the William H. Kain County Park in York County, PA. We had investigated the parking opportunities the day before and decided that the parking lot accessible from Hess Farm Road was ideal. We researched the trail map and read the trail description in Ride Pennsylvania Horse Trails Part I. We opted for Trails 3, part of 4 and Trail 1. The next decision: "to helmet or not to helmet." My self-righteous side said "play it safe and wear the helmet". My indulgent side said "to Hades with the helmet". On such a beautiful day..... I'll take my chances. That decision made, we loaded up and in 20 min we were there!

-continued on the following page-

"Like" us on Facebook: <http://www.facebook.com/masondixonpfha>

Mason Dixon Events (shows, clinics, demos, trail rides) as-well-as Photo Albums can be found on our Facebook Page. Visit us TODAY!

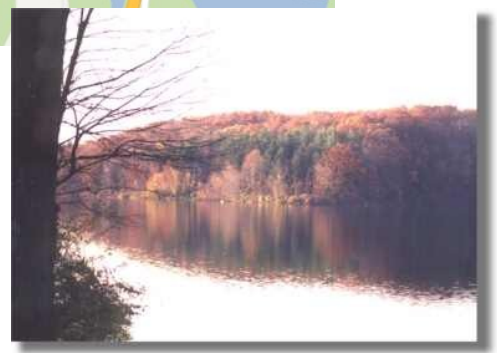
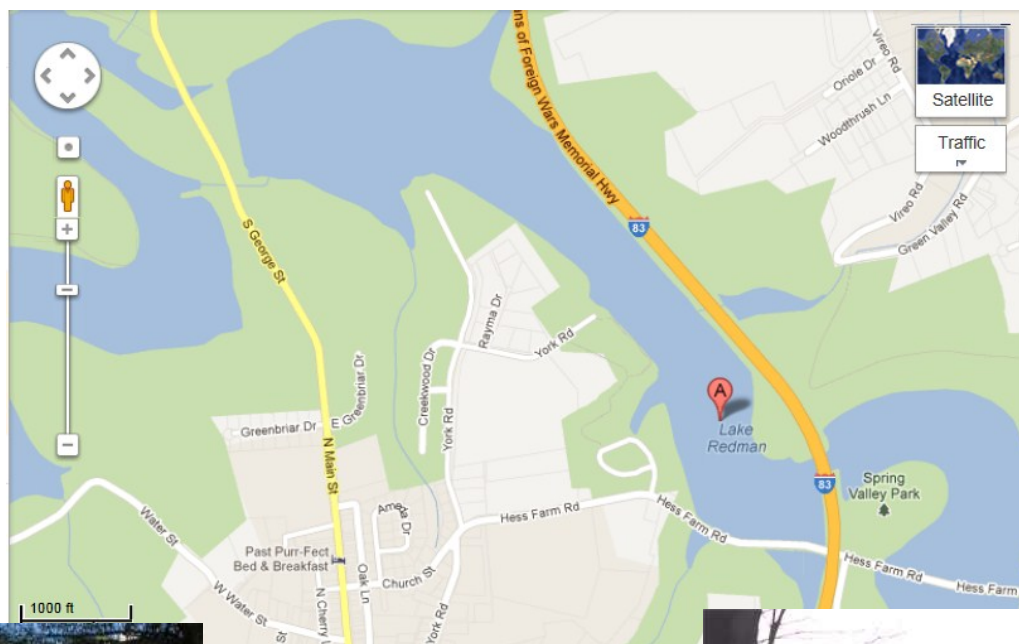
Parking was a snap. In no time the bathroom facilities had been located; after which a map was obtained. The sun was shining brilliantly; there was not a cloud in the sky. The ripples on the lake shimmered and danced as the light breeze brushed the surface of the water and wafted through the trees. The birds were singing, rabbits hopping and chipmunks and squirrels were rustling in the underbrush. What a glorious day to be alive and traveling with our steeds, Zazamora and Cometa, on another adventure!

We began our trek on Trail 3, which began behind the Concert Stage. Soon we were winding our way under the trees and along side the lake. Within minutes, we faced our first obstacle: a low wide wooden bridge. This bridge was no sounding board! It was twice as wide and made of planks. It might just as well have been made of molten lava! Having dismounted, we negotiated the deadly menace and were off again. The trail was well marked and climbed over several small hills, through the trees and finished with a longish stretch as a single footpath through overgrown grass. (It was like a scene out of “Lord of the Rings” or “The Hobbit”) Next obstacle: The Susquehanna Trail (a.k.a. South George Street). We needed to cross the highway to access Trail 4. Traffic was not excessive and we managed to lead our mounts safely to the other side. We descended the hill and when confronted with a “T” intersection, turned right to go toward the dam and Trail 1. We survived an encounter with 3 bicycles and a pit bull terrier (running free). The dog was restrained as we passed, but, upon release decided he had an appetite for Paso Fino. We larged away, leaving the dog in the dust; tongue hanging and a look of disappointment on his swiftly receding face. Having set our sights on the man-made dam that holds back the reservoir known as Lake Redman, we continued down Trail 4 until it ended at that recurring obstacle: The Susquehanna Trail. This time, Karen again wisely walked Zaza across the highway and along the east berm, crossing the active spillway and up to the access point for Trail 1. I, in my risk-taking, devil-may-care mood rode my way across the highway and across the bridge. Cometa decided that the steel expansion joints were designed to trap him so, air-borne evasive maneuvers were required. After having put a generous distance between his belly and the expansion joints, Cometa and I zoomed down to the Trail 1 trailhead. (Live long enough to learn, I say!) Posted signs indicated that Trail 1 was closed during the week. Sigh. Well, “What if the weekday is a holiday?” Once again, we took our chances. The first obstacle of Trail 1 was the dam itself. There is a steep grassy hill on the “downstream” side and a rocky embankment that ends at the waters edge on the upstream side. The trail across the top is wide, well maintained and easily traversed. Trail 1 was very diverse in the topography it negotiated. First there was a slight uphill and the track was quite wide, then we traveled a section that was being clear-cut (probably the reason for the weekday closure of the trail), followed by a section under a powerline. We then dove into the woods and traveled through switchbacks aplenty to get us off of the hillside. Interspersed among the switchbacks were, ugh, mud puddles. Noth-

fear into Cometa's heart, quite like the presence of mud puddles. Brave Zaza lead the way and we all arrived back at the dam without further incident. The horses were hot and a bit tired as we finished Trail 1, so we decided to head back to the trailer over most of the same trails. We took a few alternate branches from Trail 3, straying closer to the lake. The views were nicer and we rode behind the large sign, visible from Rt. 83, that declares the name of the lake (Lake Redman, in case you forgot). I think of it as the York County version of the "Hollywood" sign, (and muse about cultural insensitivity ("or is it just somebody's name?", I wonder)). Soon we were back at the parking area. Our rig had been joined by another during our absence. It, too, consisted of a red truck with white trailer, but our horses knew which one was their ticket home. In no time, the tack was off, water buckets filled, offered and ignored, and patches of grass munched quite short. Under an unblemished sky, the lake continued to sparkle and dance while we loaded up. As we left the William H. Kain County Park, we were followed by the aroma of smoke from family barbeques being carried on the breeze and reminded of what it meant to be alive and well on that Memorial Day, 2008.

<http://www.yorkcountyparks.org/parkpages/Kain.htm>

<http://www.patrail.com/>





CAST YOUR VOTE

Make sure your favorite USEF Breed Competition gets recognized.



"My Favorite USEF Breed Competition" for 2012 is Now Open for Voting

Make sure to cast your vote in "My Favorite USEF Breed Competition". This competitor's choice award helps to recognize an outstanding USEF breed competition in eleven breed categories, with a chance to win an exhibitor's pizza party or ice cream social in the coming year.

Voting is open now and runs through December 1, 2012.

Vote online at <https://www.usef.org/AUAIFrames/FavoriteBreed/default.aspx>.

All USEF members in good standing who have participated in a USEF licensed breed competition as a trainer, coach, rider, driver, handler, official or owner, are encouraged to vote and share their feedback with the USEF. One vote per member.

Members, consider voting for the **MASON DIXON SPECTACULAR** in Lexington, Virginia as your **FAVORITE USEF BREED COMPETITION!**

You will need to search for Competition 279069 (date: June 8).

Exploring the Land of Kimchi and Typhoons

During the early weeks of summer, I volunteered to participate in a regularly occurring activity organized by our Government. While the activity occurs annually, this was the first opportunity in which I had the chance to participate. Travel to Asia has always interested me. I went to India in the early 80s and China in the mid-90s, so, when a chance came my way to go to South Korea, I was eager.

While I'm not at liberty to discuss the work, I'd like to share with you some of the adventures my officemate and I had while "in country". To orient yourself, please refer to the map of South Korea, to the right.



Exploring the Land of Kimchi and Typhoons, – continued.

I departed home at 4 AM on 13 August, flying from Baltimore to Atlanta then directly to Incheon Airport, just west of Seoul. After crossing the International Date Line (which always throws me off when trying to figure out when I'm where), I arrived in South Korea at around 6 PM on the 14th. After taking an hour bus ride from Incheon to Seoul, I arrived at my 5-star hotel, soaked and exhausted from hauling my luggage 2 blocks in the pouring rain. I was warned that August was the monsoon season in Korea and the weather did not disappoint. My 1st full day involved taking a tour of the campus on which I'd be working.... On foot. Seoul received 12 inches of rain that day. I now understand how one could contract "Trench foot".

My officemate, Joanna, and I decided to take the metro "uptown" on our 1st half-day off. After we figured out the difference between an ATM and a ticket-dispensing machine (they both look alike to me) and, with the help of bilingual (and not so bilingual) friends, we managed to make our way to stop 329 on the Orange Line (#3). We wandered around, taking a walk through the campus of a private school and the Jong Myo Shrine. Pooped, we returned by metro and rested until going in to work at 5 PM.

On 18 August, a colleague (Howard), Joanna and I took a bus to the Osan Air force Base (south of Suwŏn). Osan is known for its cheap prices for "tourist goods". If you work on the Base, I'm certain that Osan is known for much more. It reminded me of Bourbon Street in New Orleans, complete with bars and brothels. I got



Jong Myo Shrine-resting place for spiritual tablets of deceased kings and queens.

the sense that it was not a place for the faint of heart on a Friday or Saturday night. We enjoyed coffee and walnut milkshakes at McDonalds before catching a bus to take us back to Seoul. I had managed to buy a pack of postcards, but nothing else.

On 23 August, we were given special permission to take most of the day off to take a tour of the Demilitarized Zone (a.k.a. the DMZ). The tour included a visit to the Joint Security Area, The Bridge of No Return, a ROK (Republic of Korea (South Korea)) Military Outpost (Dora Observatory) and Tunnel #3, among other "attractions". Touring the DMZ was VERY worthwhile. It is the most heavily militarized border in the world. All was quiet when we were there but you got the sense that tensions run very high along the border and NOBODY is fooling around. Anything could happen at any time without warning. Visitors are warned: not to verbally threaten, stare, gesture, speak to, touch,



Joint Security Area. Blue buildings are for bilateral negotiations; gray building is the North Korean Welcome Center. Dark line between blue buildings is the line of Demarcation.

stand within 6 inches of North or South Korean soldiers, to not carry anything but a camera; to restrict movements of the arms and hands; no photography of South Korean fortifications; don't go near the door on the N.K. side of the conference room; etc. [Tunnel #3](#) was dug secretly by the North to allow for a surprise attack on Seoul. Hiking Tunnel #3 was exhausting. The entrance was 300 meters long at a 40° angle, no steps, just a ramp. Killed the knees. The tunnel itself was a head knocker. Ceiling was low and hard hats softened most of the blows. We also went to the Dora Observatory and the Peace Bridge. The South Koreans are very well aware of the vulnerability of their capital, being about an hours drive from the North. All males serve 2 years in the active military with phased civilian defense responsibilities lasting until the age of 45.

One of our other adventures included a trip to the Korean War Memorial. We spent a half day touring the museum. The museum documents the [long volatile history of Korea](#). Typically, we westerners think only of the Korean Conflict, but the Korean peninsula has a long and troubled past due primarily to aggressions by Japan to the east and their influential neighbor, China, to the north.

Our last real tour was to the Palace District in the northern part of the city. We visited the [Gyeongbokgung Palace](#) in Seoul. The Palace Complex originally included 330 buildings. All but 10 were destroyed by the Japanese during the 1911 invasion and subsequent occupation.

I came away with the sense that the Republic of Korea lives the essence of Yin and Yang: the past in harmony with the future, peace with war, tradition with modern innovation. ROK citizens are among the friendliest, tidiest and most polite people I have yet had the privilege to meet.— Diane



View of North Korea from the Dora Observatory



Visit to the Peace Bridge. Banners and flags are personal wishes for peace and reunification by South Koreans and people from all free nations.



Tack from the Joseon Period , 15th Century. See [Jeju Horses](#) for more info.



Static displays at War Memorial



One of the Gyeongbokgung Palace buildings

Directions to the Kentucky Horse Park

4089 Iron Works Parkway
Lexington, KY 40511
(800) 678-8813

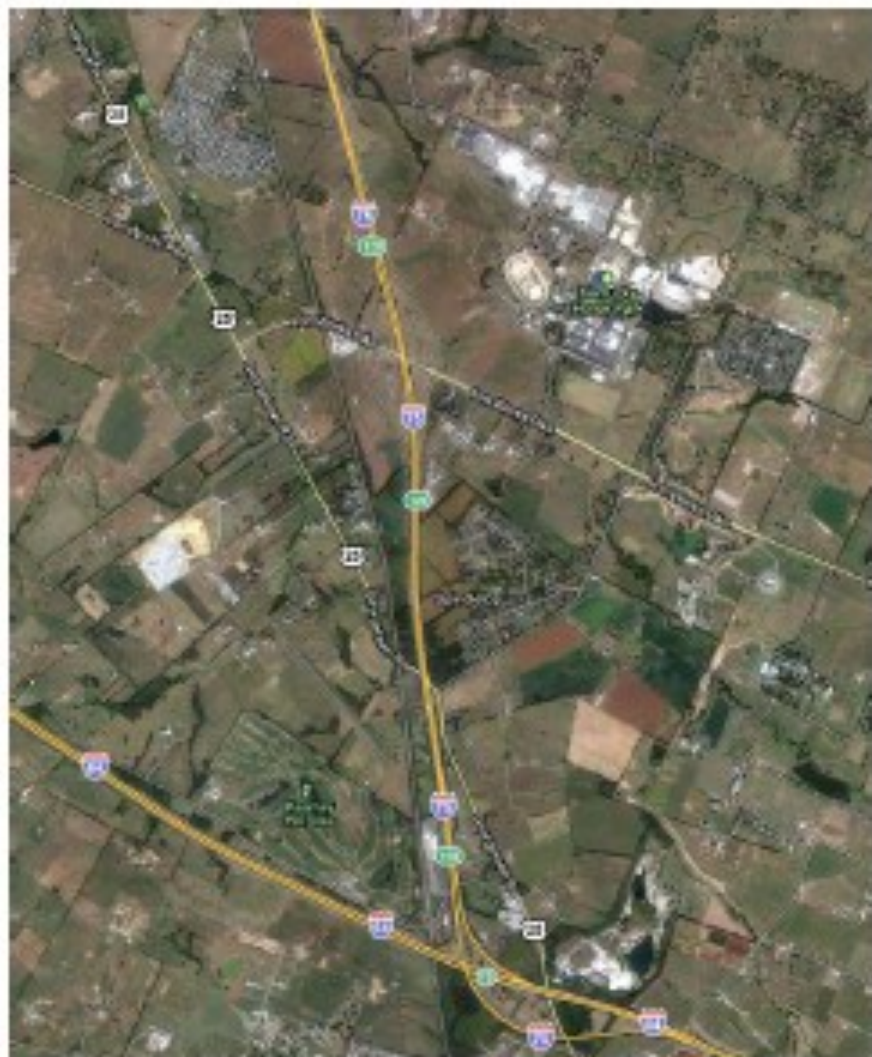
From Louisville, KY - Travel eastbound on Interstate 64 for approximately 70 miles to Interstate 75. Take Exit 75 northbound towards Cincinnati (merging traffic will join I-75 traffic in the left-hand lane and will have approximately 2 miles to move to the right-hand lane to get off at Exit 120). At the top of the exit ramp, turn right and travel eastbound on Iron Works Pike (1973). The park's main entrance will be on the left in .5 miles and the park's campground entrance will be on the left in .9 miles.

From Cincinnati, OH - Travel southbound on Interstate 75 towards Lexington for approximately 71 miles to exit 120. At the top of the exit ramp, turn left and travel eastbound on Iron Works Pike (1973). The park's main entrance will be on the left in .7 miles and the park's campground entrance will be on the left in 1.1 miles.

From Knoxville, TN - Travel northbound on Interstate 75 towards Lexington for approximately 173 miles to exit 120. At the top of the exit ramp, turn right and travel eastbound on Iron Works Pike (1973). The park's main entrance will be on the left in .5 miles and the park's campground entrance will be on the left in .9 miles.

From Charleston, WV - Travel westbound on Interstate 64 towards Lexington for approximately 168 miles to Interstate 75. Interstate 64 will merge with Interstate 75 on the east side of Lexington, so take the merged I-64W/I-75N towards Cincinnati/Louisville to Exit 120 at Iron Works Pike (1973). At the top of the exit ramp, turn right and travel eastbound. The park's main entrance will be on the left in .5 miles and the park's campground entrance will be on the left in .9 miles.

From Blue Grass Airport - Travel southeast .3 miles on Terminal Drive toward Air Freight Drive. Turn left on Man o' War Blvd. and travel northbound for .3 miles. Turn right on US-60/Versailles Road and travel eastbound for 1.5 miles. Take the ramp until KY-4 N/New Circle Road and travel 4.1 miles north/eastbound. Take exit 8 for US-25/Georgetown Road and turn left onto Georgetown Road and travel northbound towards Georgetown for 5.5 miles. At the stop light, turn right onto Iron Works Pike (1973). The park's main entrance will be on the left in 1.2 miles and the park's campground entrance will be on the left in 1.6 miles.



Hotel & Motel Information

We have selected hotels in Lexington, Kentucky, and Georgetown, Kentucky, as our host hotels. The majority of the hotels are within 6 miles of the Horse Park. We suggest that you make your reservations as early as possible as there are several events occurring in Lexington and the surrounding area that will be competing for hotel rooms. The Keeneland race track will start their winter meet on October 3, 2012, the Vice Presidential Debates will take place during the same week as our show in Danville, Kentucky (Danville is just south of Lexington), and there is a University of Kentucky home football game. The Kentucky Horse Park will have two other competitions at the same time, a carriage competition and a dressage competition. The hotels have guaranteed a certain number of hotel rooms until their cut-off date or until the reserved block of rooms has been filled. DO NOT wait to reserve your rooms.

When making reservations, ask for the PFHA Show Rate

Lexington, Kentucky Hotels

Embassy Suites

Address: 1801 Newtown Pike, Lexington, Kentucky 40511

Cost: \$149.00 plus tax

Breakfast: Included

Reservations: 1-800-362-2779

Cut off Date: 8/4/2012 or when reserved rooms are booked

Web-Site: www.lexington-embassysuites.com

Distance from the Horse Park: 5.1 Miles 9 Minutes

Griffin Gate Marriott

Address: 1800 Newtown Pike, Lexington, Kentucky 40511

Cost: \$134.00 plus tax

Breakfast: Not Included

Reservations: 1-800-266-9433

Cut off Date: 9/14/2012 or when reserved rooms are booked

Web-Site: www.griffingatemarriott.com

Distance from the Horse Park: 5.1 Miles 9 Minutes

Hilton Lexington/Downtown

Address: 369 West Vine Street, Lexington, Kentucky 40507

Cost: \$149.00 plus tax

Breakfast: Not Included

Reservations: 1-877-539-1648

Cut off Date: 8/4/2012 or when reserved rooms are booked

Web-Site: www.lexingtondowntown.hilton.com

Distance from the Horse Park: 10 Miles, 15 Minutes

Courtyard Marriott Lexington North

Address: 775 Newtown Pike, Lexington, Kentucky 40511

Cost: \$109.00 plus tax

Breakfast: Not Included

Reservations: 1-800-321-3211

Reference Code M-80TY6]

Cut off Date: 9/12/2012 or when reserved rooms are booked

Web-Site: www.marriott.com/LEONCO

Distance from the Horse Park: 7 Miles 10 Minutes

Fairfield Inn & Suites

Address: 2100 Hackney Place, Lexington, Kentucky 40511

Cost: \$109.00 plus tax

Breakfast: Included

Reservations: 1-800-228-2800

Cut off Date: 9/15/2012 or when reserved rooms are booked

Web-Site: www.marriott.com/lexcaw

Distance from the Horse Park: 5 Miles, 8 Minutes

Clarion Hotel

Address: 1950 Newtown Pike, Lexington, Kentucky 40511

Cost: \$99.00 plus tax

Breakfast: Included

Reservations: 1-877-424-6431

Cut off Date: 9/12/2012 or when reserved rooms are booked

Web-Site: clarionhotel.com/hotel-lexington-kentucky-KY231

Distance from the Horse Park: 5.0 Miles 8 Minutes

Four Points by Sheraton

Address: 1938 Stanton Way Newtown Pike, Lexington, Kentucky 40511

Cost: \$99.00 plus tax

Breakfast: Not Included

Reservations: 1-800-325-3535

Cut off Date: 9/4/2012 or when reserved rooms are booked

Web-Site: www.fourpoints.com/Lexington

Distance from the Horse Park: 5 Miles, 8 Minutes

Ramada Conference Center

Address: 2143 North Broadway, Lexington, Kentucky 40505

Cost: \$89.99 plus tax

Breakfast: Not Included

Reservations: 1-800-372-6232

Cut off Date: 9/21/2012 or when reserved rooms are booked

Web-Site: ramadaflexky.com

Distance from the Horse Park: 7 Miles, 10 Minutes

La Quinta Inn

Address: 1920 Stanton Way, Lexington, Kentucky 40511

Cost: \$89.00 plus tax

Breakfast: Included

Reservations: 1-800-753-3757

Cut off Date: 9/12/2012 or when reserved rooms are booked

Web-Site: www.lq.com

Distance from the Horse Park: 5 Miles, 8 Minutes

Georgetown, Kentucky Hotels

Holiday Inn Express

Address: 140 Osborne Way, Georgetown, Kentucky 40324

Cost: \$99.99 plus tax

Breakfast: Included

Reservations: 1-800-570-0220

Cut off Date: 9/4/2012 or when reserved rooms are booked

Web-Site: www.holidayinn.com

Distance from the Horse Park: 6 Miles, 12 Minutes

Best Western Hotel

Address: 112 Darby Dr. Georgetown, Kentucky 40324

Cost: Friday and Saturday \$82.00, Sunday – Thursday \$66.99 plus tax

Breakfast: Included

Reservations: 502-868-0055 or 1-800-328-1238

Cut off Date: 9/10/2012 or when reserved rooms are booked

Web-Site: www.bestwestern.com/geop18085

Distance from the Horse Park: 6 miles, 12 minutes

2012 GNS CLASS SCHEDULE

Sunday, October 7, 2012

- 1 Bella Forma 3 Year Old Colts
- 2 Fino Youth 10-12
- 3 Performance Youth 7-9
- 4 Bella Forma 2 Year Old Colts
- 5 Fino Youth 16-17
- 6 Bella Forma Yearling Colts
- 7 Performance Youth 13-15
- 8 Bella Forma Stallions
- 9 Bella Forma Stallions/Colts Championship (QC 1, 4, 6, 8)
- 10 Horsemanship 16-17
- 11 Horsemanship 13-15
- 12 Walk-Corset Leadline
- 13 Horsemanship 10-12
- 14 Horsemanship 7-9
- 15 Pleasure Mares
- 16 Performance Youth 16-17
- 17 Fino Youth 7-9
- 18 Pleasure Geldings
- 19 Performance Youth 10-12
- 20 Pleasure Stallions
- 21 Fino Youth 13-15
- 22 Driving

Monday, October 8, 2012

- 23 Bella Forma 3 Year Old Fillies
- 24 Equitation 16-17
- 25 Bella Forma 2 Year Old Fillies
- 26 Equitation 13-15
- 27 Bella Forma Yearling Fillies
- 28 Equitation 10-12
- 29 Bella Forma Mares
- 30 Equitation 7-9
- 31 Bella Forma Mares/Fillies Championship (QC 23, 25, 27, 29)
- 32 Trocha*
- 33 Youth Horsemanship Championship (QC 10, 11, 13, 14)
- 34 Breeder's Sweepstakes Colts
- 35 Country Pleasure
- 36 Pleasure Youth 7-9
- 37 Pleasure Youth 13-15
- 38 Get of Sire
- 39 Pleasure Youth 10-12
- 40 Produce of Dam
- 41 Pleasure Youth 16-17
- 42 Pleasure Geldings for Gold
- 43 Fino Youth Championship (QC 2, 5, 17, 21)

Tuesday, October 9, 2012

- 44 Bella Forma Geldings
- 45 Pleasure Youth Championship (QC 36, 37, 39, 41)
- 46 Bella Forma 3 Year Old Geldings
- 47 Trocha-Gallop*
- 48 Bella Forma 2 Year Old Geldings
- 49 Bella Forma Yearling Geldings
- 50 Breeder's Sweepstakes Fillies

- 51 Bella Forma Geldings Championship (QC 44, 46, 48, 49)
- 52 Pleasure A/O Stallions
- 53 Pleasure 4 Year Old Fillies
- 54 Pleasure A/O Geldings
- 55 Pleasure 3 Year Old Colts
- 56 Gold Medal Equitation
- 57 Pleasure 3 Year Old Geldings
- 58 Versatility
- 59 Performance Youth Championship (QC 3, 7, 16, 19)
- 60 Pleasure 3 Year Old Fillies
- 61 Pleasure A/O Mares
- 62 Pleasure 4 Year Old Colts
- 63 Youth Equitation Championship (QC 24, 26, 28, 30)
- 64 Pleasure 4 Year Old Geldings

Wednesday, October 10, 2012

- 65 Trail
- 66 Performance A/O 4 Year Old Fillies
- 67 Performance 3 Year Old Geldings
- 68 Performance A/O 4 Year Old Geldings
- 69 Performance 3 Year Old Colts
- 70 Performance A/O 4 Year Old Colts
- 71 Performance 3 Year Old Fillies
- 72 Pleasure A/O 3 Year Old Geldings
- 73 Performance Geldings
- 74 Pleasure A/O 3 Year Old Colts
- 75 Pleasure A/O 3 Year Old Fillies
- 76 Pleasure A/O 4 Year Old Geldings
- 77 Western Pleasure
- 78 Pleasure A/O 4 Year Old Fillies
- 79 Performance Mares
- 80 Pleasure A/O 4 Year Old Colts
- 81 Performance Stallions
- 82 Pleasure A/O Geldings for Gold

Thursday, October 11, 2012

- 83 Performance A/O Geldings
- 84 Fino A/O 4 Year Old Geldings
- 85 Performance 4 Year Old Geldings
- 86 Fino A/O 3 Year Old Geldings
- 87 Performance A/O 3 Year Old Colts
- 88 Fino A/O Geldings
- 89 Performance 4 Year Old Colts
- 90 Fino A/O 4 Year Old Colts
- 91 Performance A/O 3 Year Old Fillies
- 92 Performance 4 Year Old Fillies
- 93 Performance A/O 3 Year Old Geldings
- 94 Pleasure Geldings Championship (QC 18, 57, 64)
- 95 Fino A/O 3 Year Old Colts
- 96 Trocha-Gallop*
- 97 Fino Geldings for Gold
- 98 Performance A/O Mares
- 99 Fino 3 Year Old Fillies
- 100 Fino A/O Stallions

- 101 Fino 4 Year Old Fillies
- 102 Performance A/O Stallions
- 103 Fino Mares

Friday, October 12, 2012

- 104 Pleasure A/O Geldings Championship (QC 54, 72, 76)
- 105 Fino Geldings
- 106 Pleasure A/O Mares Championship (QC 61, 75, 78)
- 107 Performance Geldings Championship (QC 67, 73, 85)
- 108 Fino 3 Year Old Geldings
- 109 Fino A/O 3 Year Old Fillies
- 110 Fino 4 Year Old Geldings
- 111 Performance A/O Stallions Championship (QC 70, 87, 102)
- 112 Fino A/O 4 Year Old Fillies
- 113 Fino 3 Year Old Colts
- 114 Fino A/O Geldings Championship (QC 84, 86, 88)
- 115 Performance Futurity
- 116 Performance A/O Geldings for Gold
- 117 Fino A/O Mares
- 118 Pleasure A/O Stallions Championship (QC 52, 74, 80)
- 119 Fino 4 Year Old Colts
- 120 Performance A/O Mares Championship (QC 66, 91, 98)
- 121 Fino Stallions

Saturday, October 13, 2012

- 122 Pleasure Stallions Championship (QC 20, 53, 62)
- 123 Fino A/O Geldings for Gold
- 124 Pleasure Mares Championship (QC 15, 53, 60)
- 125 Fino A/O Mares Championship (QC 109, 112, 117)
- 126 Pleasure Futurity
- 127 Performance Geldings for Gold
- 128 Fino Futurity
- 129 Adult Amateur Equitation
- 130 Performance Stallions Championship (QC 69, 81, 89)
- 131 Fino A/O Stallions Championship (QC 90, 95, 100)
- 132 Fino Geldings Championship (QC 105, 108, 110)
- 133 Performance A/O Geldings Championship (QC 68, 83, 93)
- 134 Fino Mares Championship (QC 99, 101, 103)
- 135 Costume
- 136 Performance Mares Championship (QC 71, 79, 92)
- 137 Fino Stallions Championship (QC 113, 119, 121)

NOTE

*These classes are non-recognized classes by USEF - Please use the special Trocha/Trocha Division Entry Form for these classes only.

QC =Qualifying classes for designated Championship Class

Classes may be combined at the discretion of show management.

Break times will be announced.

Recreational Rider Event Schedule

All recreational rider activities will take place at the outdoor Claiborne Arena unless otherwise indicated.

Claiborne Arena		
All Cowboy Mounted Shooting activities will be held in the covered arena on Tuesday, Thursday and Saturday at the lunch break.		
Start	End	WEDNESDAY
9 am	10 am	
10 am	11 am	<i>"Starting your Paso with CALM Techniques-Day 1"</i> Clinic - TJ Clibborn & Tracy Porter
11 am	11:30 am	Breed Exhibition (versatile recreational horses & show horses)
11:30 am	12 pm	Obstacle Exhibition
12 pm	1 pm	Largo Race - Heat #1 & #2
1 pm	1:30 pm	Freestyle Exhibition/Mini Clinic - Camilla Willings
2 pm	3 pm	Obstacle Clinic - <i>"Starting Your Horse with Obstacles (ground work)" Part 1</i> - Tracy Porter/TJ Clibborn
3 pm	4 pm	Barrels Clinic - <i>Getting Started w/Barrels</i> - Clinician TBA
4 pm	5 pm	Barrel Racing - Heat #1
THURSDAY		
9 am	10 am	<i>"Starting your Paso with CALM Techniques-Day 2"</i> Clinic - TJ Clibborn & Tracy Porter
10 am	11 am	Soccer Clinic - <i>"The Basics of Soccer Play"/ "Getting Your Horse Started"/demo</i> - Rick Shaffer
11 am	12 pm	Largo Race - Heat #3 & #4
12 pm	12:30 pm	Breed Exhibition (versatile recreational horses & show horses)
12:30 pm	1 pm	Freestyle Exhibition/Mini Clinic - Camilla Willings
1 pm	2 pm	Pole Bending Clinic - <i>Getting Started w/Poles</i> -TBA
2 pm	3 pm	Obstacle Exhibition
3 pm	4 pm	* Obstacle Clinic (\$25) - <i>"Starting Your Horse with Obstacles (under saddle)" Part 2</i> - Tracy Porter/TJ Clibborn
4 pm	5 pm	Pole Bending - Heat #1
4 pm	5:30 pm	Organized Trail Ride
FRIDAY		
9 am	10 am	<i>"Starting your Paso with CALM Techniques-Day 3"</i> Clinic - TJ Clibborn & Tracy Porter
10 am	11 am	*Soccer Clinic (\$25)- <i>Working w/Your Horse</i> - Rick Shaffer
11 am	11:30 am	Soccer Practice Play (included with Soccer Clinic)
11:30 am	12 pm	Breed Exhibition (versatile recreational horses & show horses)
12 pm	12:30 pm	Largo Race - Heat #5
12:30 pm	1 pm	Extreme Obstacle Challenge (timed) - Check in
1 pm	2 pm	Extreme Obstacle Challenge (timed)
2 pm	3 pm	Obstacle Exhibition
3 pm	4 pm	
4 pm	5 pm	RR Social
10 am	4 pm	Ride a Paso (open to the public)
SATURDAY		
9 am	9:30 am	Obstacle Challenge - Check in
9:30 am	10 am	<i>"Starting your Paso with CALM Techniques-Day 4"</i> Obstacle Course - TJ Clibborn
10 am	11 am	Obstacle Challenge
11 am	12 pm	
12 pm	12:30 pm	Breed Exhibition (versatile recreational horses & show horses)
12:30 pm	1 pm	Obstacle Exhibition
1 pm	2 pm	Freestyle Competition
2 pm	2:30 pm	Freestyle Exhibition/Mini Clinic - Camilla Willings
2:30 pm	3 pm	Soccer Exhibition
3 pm	4 pm	
10 am	4 pm	Ride a Paso (open to the public)

Clinics are FREE unless noted with "*" indicating horse & rider participation. All clinics may be audited free of charge. The above schedule and activities may be changed at discretion of show management. Additional activities may be included as time schedule permits.

**PFHA RECREATIONAL RIDER
2012 GRAND NATIONAL SHOW ENTRY FORM**

Entry form must be accompanied with copy of current PFHA membership card
and PFHA horse registration certificate.
Coggins and Health Certificate may be presented to Show Secretary at check-in.
ONE HORSE PER ENTRY FORM.

* Pre-registration Deadline for all competitive events is September 10th.
Stall reservations cannot be guaranteed after this date.

PFHA Horse #	Registered Name of Horse			Sex
Health Requirements		Coggins Date	Health Certificate Date	
1-year negative Coggins for all horses and 1-year Health Certificate for in-state horses or a 30-day Health Certificate for out-of-state horses				
Responsible Person for Entry Fees				
Name:		Address:		
City:	State:	Zip:	Phone:	
Email:	Payment: Check #		Amt \$	CC: Use Credit Card Form
<p>For all Recreational Rider Competitions, with the exception of the Largo Race and Freestyle: a horse may be ridden by more than one rider in an event. List all riders on this entry form riding horse listed above.</p> <p align="center">HELMETS</p> <p>** Helmets are MANDATORY for ALL recreational riding activities for YOUTH 18 and under. ** Helmets are highly recommended for all recreational riders participating in any of the recreational activities.</p>				
Event/Cost	Rider	Junior Birth Date (19 & under)	PFHA Member #	Entry Fee
OBSTACLE CHALLENGE EVENTS				
* Obstacle Challenge-\$35				\$
* Obstacle Challenge-\$35				\$
* Extreme Challenge-\$25				\$
* Extreme Challenge-\$25				\$
Obstacle Clinic Horse & Rider-\$25				\$
FREE STYLE COMPETITION				
* Free Style-\$25				\$
SOCCER				
Soccer Clinic Horse & Rider-\$25				\$

Continued on Next Page

Event/Cost	Rider	Junior Birth Date (13 & under)	PFHA Member #	Entry Fee
BARREL RACING (Speed Event Series)				
* Barrel Racing-\$95				\$
* Barrel Racing-\$95				\$
POLE BENDING (Speed Event Series)				
* Pole Bending-\$95				\$
* Pole Bending-\$95				\$
COWBOY MOUNTED SHOOTING (Speed Event Series)				
* Mounted Shooting-\$95				\$
* Mounted Shooting-\$95				\$
LARGO RACE				
* Largo Race-\$100				\$
Heat Requested (refer to RR schedule)		Total for all Events		\$

\$175 stall fee applies only to horses not showing in regular show classes and arriving Wednesday or later. Recreational stalls are limited and available on a first come basis.

R/V Hookups/Sites –Available through the KHP Campground. Call campground direct, (800) 370-6416, for reservations.

*** Pre-registration deadline for all Recreational Rider competitive events: Sept. 10th. Stall reservations cannot be guaranteed after this date.**

α SIGNATURES REQUIRED ON WAIVER β

Check-in on Wednesday or later (non Show horses only)	\$
Horse Stalls x \$175 each	
Check-in on Wednesday or later (non Show horses only)	\$
Tack Room x \$175 each	
Check-in prior to Wednesday	\$
Horse Stalls x \$220 each	
Check-in prior to Wednesday	\$
Tack Room x \$220 each	
Stall Total	\$
Total Due	\$

Annual Charles Town, WV Parade of Horses

Sunday, 23 September at 2:00 PM

Started in 1996, the Historic Charles Town PARADE OF HORSES has been growing every year. In 2008, they had 367 horses entered from WV, VA, MD, PA and NJ! We had 90 different entries, our most ever! The weather was beautiful, and we had a great turnout of both horses and spectators!

*** ***** ***



All of the entries must be horses, riders, mules, donkeys, or horse drawn wagons & carriages. Participants decorate themselves, their horses, and their wagons or carriages in many different themes and are judged in 13 different categories. The parade starts in the parking lot of Charles Town Races & Slots, and continues down through the main street of Charles Town. The judges are positioned at the Square, across from the courthouse. The participants will try to impress the judges with drill team maneuvers, their decorating skills, and their best big smiles and waves.

For more information on watching or participating in the parade, email them at

horseparade@dubbleRfarm.com

Mason-Dixon Paraders..... This is a GREAT Parade Opportunity. The parade is on fairly level ground. It is well organized and the organizers provide manure pick-up. You need only clean around your trailer. Mason-Dixon won "Best Small Group" in 2008, when we last participated. Recurrent bad weather has caused this event to be rescheduled from December to September.



MASON DIXON CLASSIFIEDS

Horses for Sale

9 y/o PF Bay Gelding—gentle in hand but with controlled brio, Pleasure show or Performance—\$7000. Call 484-256-4625.

11 y/o Bay Stallion—Inquire . Call 484-256-4625.

Tack for Sale

Albion Saddle: Lightly used. Appraised at \$1100. Asking \$1000. Size: Medium/Wide, 16". Call 717-993-9686 for additional information.

Casa Dosa Saddle: Lightly used. 16" - \$650. Call 434/933 8185 or jimimbur@yahoo.com

TNT

PASO FINOS

HOME OF INTOCABLE DE VICTORIA
SIRE OF MULTI NATIONAL CHAMPION

RAYITO DE EMERALD VALLEY
TRAINER, PFHA AND USEF CERTIFIED JUDGE

NICHOLAS A. BURGOS

484-256-4625 EMAIL: TNTPASOS@GMAIL.COM



Shavings/Sawdust Delivery ~ Manure Removal
Stallion Service ~ Paso Sales

Randy and Janet Weese
weesepasos@msn.com

540-270-8271 (cell)
540-439-9337 (office)

Dick Shaffer
814-634-0900

Rick Shaffer
814-444-0622
Cell: 814-233-5407

R&S Paso Fino's
Smoothest Riding Horse in the World

3079 Water Level Road
Somerset, PA 15501
Email: rspaso@shol.com
Web: www.rspaso.com

Standing at Stud:
El Glatiador de Plebeyo
& Montecristo del Paso

Middlefield Farm
PASO FINO HORSES

**SALES
&
BREEDING**

Middlefield Farm
Keith & Lisa Gorsuch
4988 Middleburg RD, Taneytown, MD 21787
E-Mail: middlefieldfarm@verizon.net
Cell: 410-596-5586 Home: 410-848-9532

www.middlefieldpasofinos.com

HACIENDA RADIANTE

Home of
LABERINTO DE LA LUISA
(Patrimonio del 8 x Joya de la Luisa)
STUD FEE \$1500 LRG

Training • Breeding • Sales
Clementon, NJ | pasos4people.com



Promise Gail Farm
Paso Finos

George & Maryan Schlesman

2045 Esten Road
Quakertown, PA 18951

215.536.0666
pasothree@comcast.net



MASON DIXON CLASSIFIEDS

Hillside Farms Paso Finos

Horses for Sale

Stud Service
Home of Quatro Pistonas del Paso

B.J. & Gary Schuler
750 Cowpath Rd.
Telford, PA 18969
215-723-8499



www.hillsidefarms.biz

Advertise in the PowerGlide!
6 Editions
Business Cards (1-2 sides) - \$25
1 page - \$175
½ page - \$120
¼ page - \$60
No Charge for Clinic or Trail Ride Advertisements
Classified Section: 4 line advertisement for FREE. Limit 2 Ads per issue.



Learning Center
for the Horse and Rider

Where Gait is our Goal

Jim Laird
(717) 577-5068
E-mail: paji24@aol.com
Felton, PA

Standing at Stud
Cancionero de la Roca

EQUINE APPRAISALS AND CONSULTING SERVICES
3182 Burnt Mill Road • Charlottesville, VA 22911

AMANDA HAMILTON

Certified member of American Society of Equine Appraisers

Home: (434) 973-4927
Cell: (434) 989-5321
Fax: (434) 973-5027

preferencefarm@firstva.com

ROSANNE ASHLEY
84 DEER VIEW DRIVE
JIM THORPE, PA 18229
(302) 382-4300
(570) 351-7966



ROYAL FLUSH PASO FINOS

PRODUCING QUALITY
GAIT & TEMPERAMENT
BREEDING & SALES

EL PASTOR DEL JUNCAL
PROFETA DE BESILU X POMPEYA DEL JUNCAL

PASO FINO STALLION
STANDING AT STUD

OWNER: ROSANNE ASHLEY
MANAGED BY: RO-NO RANCH, WAYMART, PA
WWW.RO-NO-RANCH.COM - (570) 351-7966



www.Ro-NoRanch.com



Nola Haupt-Keill
E-mail: rono@socantel.net
House: (570) 937-4978
Cell: (570) 351-7966

Full Service Training Facility
24/7 On-Site Management
Full-Time Trainers
Lessons & Boarding
Horses for Sale or Lease
60' x 120' Covered Arena
80' x 200' Outdoor Arena
65' Round Pen

PASO FINO STALLIONS

CABALLO'S TOP GUN
2000 PASO FINO STALLION,
SIRE: PONDEROSA COLOSO
&
CALIF DE COLOR SIN PAR
2003 PASO FINO STALLION

2007 Reserve National Champion Western Pleasure & 2007 3rd Place National Champion Versatility





Mason Dixon Paso Fino Horse Association

www.masondixonpfha.org

President

Karen Basehore
3225 Orwig Road
Stewartstown, PA 17363
(H) 717-993-9686
(C) 267-446-6861

E-mail: mdpasofino@zoominternet.net

Vice President

Diane Dutt
3225 Orwig Road
Stewartstown, PA 17363
(H) 717-993-9686
(C) 267-446-6862

E-mail: mdpasofino@zoominternet.net

Secretary & Membership Chair

Kathy Dell
4988 Middleburg Rd.
Taneytown, MD 21787
(H) 410-848-9532
(C) 410-984-8548

E-mail: dell@tessco.com

Treasurer

B.J. Schuler
750 Cowpath Road
Telford, PA 18969
(H) 215-723-8499
(C) 215-859-8577

bjschuler56@comcast.net

National Delegate & Past President

Lisa Gorsuch
4988 Middleburg Rd.
Taneytown, MD 21787
(H) 410-848-9532
(O) 410-876-1088

E-mail: middlefieldfarm@verizon.net

Public Relations

PA Farm Show

Karen Basehore
(H) 717-993-9686
(C) 267-446-6861

Horse World Expos

Maryland Event

Kathy Dell
(H) 410-848-9532
(O) 410-876-1088

E-mail: middlefieldfarm@verizon.net

Pennsylvania Event

Lori Wieszkowiak
(H) 570-286-2449
(C) 570-898-1226

E-Mail: kazisimage2@aol.com

Regional Shows

Dillsburg, PA

Lisa Gorsuch

Lexington, VA

B.J. Schuler

Harrisburg, PA

Jim Laird

Trail Blazer Program Representative

Susan Data-Samtak
(H) 908-725-9649
E-Mail: pasovasz@aol.com

PFHA Regional News

Reporter

Carolyn Marinko
(H) 908-725-9649
E-Mail: solar.206@verizon.net

Youth Program

Tiffany Senseman
(H) 240-626-9165
tiffany8957@gmail.com

Futurity Program

Lisa Gorsuch
(H) 410-848-9532
(O) 410-876-1088
E-mail: middlefieldfarm@verizon.net



**Uncle Sam wants YOU
to Volunteer!**

In search of . .

Sponsorship Chair

Show Ribbon Presenters

Trail Ride Coordinator

National Show Auction

Basket Wrangler

Mason Dixon Paso Fino Horse Association

Membership Application 2012 - 2013

1 October 2012 – 30 September 2013

Membership Fees:

Individual Adult (I) = **\$20**

Family (F) = **\$25**

Individual Youth (Y) = **\$10**

First Time Paso Fino Buyers receive the
current membership year **FREE**

Optional Fees:

To receive the Power Glide by mail

Circle the format you prefer and please add **\$5:** **CD-ROM** or **Paper**

Mason Dixon Trail Blazers Program, one-time fee of \$10

Questions on this program call or email Susan Data-Samtak at 908-725-9649, PasoVasz@aol.com

Name _____

Farm Name _____

Street Address _____

City _____ State _____ Zip Code _____

Phone: Home _____; Work _____ and /or

Cell _____; Fax _____

E-Mail Address _____

Website _____

Please list all names under your Family Membership (if applicable)

Name	Date of Birth (Youth only)
------	----------------------------

_____	_____
-------	-------

_____	_____
-------	-------

_____	_____
-------	-------

_____	_____
-------	-------

_____	_____
-------	-------

_____	_____
-------	-------

Please complete the above application, make a check payable to the

Mason Dixon PFHA

and mail to

Kathy A. Dell, 4988 Middleburg Rd
Taneytown MD 21787